

# READ AND SAVE THESE INSTRUCTIONS

## IMPORTANT SAFEGUARDS

When using an electrical appliance, basic safety precautions should always be taken to reduce the risk of fire, electric shock, and/or injury, including the following:

1. **READ ALL INSTRUCTIONS BEFORE USING.**
2. To reduce the risk of shock, always power off the air purifier and unplug it from the electrical outlet immediately after using as well as before cleaning and replacing or removing any filters.
3. The air purifier should always be placed on a flat, secure surface.
4. The cord should be kept away from any heated surfaces.
5. Never place or store the air purifier where it could fall or be pulled into a sink or bathtub.
6. Do not reach for the air purifier if it has fallen into water.
7. Do not place in or drop into water or other liquids.
8. Do not place anything on top of unit.

9. Always keep the air purifier dry and do not operate in wet or moist conditions like bathrooms, laundry areas or similar moist indoor locations.
10. Always unplug the air purifier when not in use.
11. Check your air purifier cord and your outlet. A faulty wall outlet or loose plug can cause the outlet or plug to overheat. Make sure the plug fits tightly in outlet.
12. Do not run power cord under carpeting, runners or similar floor coverings.
13. Do not use this product outdoors.
14. Do not block air intake vents or exhaust in any manner. Do not use on any soft surface, like a couch or bed, where the openings may become blocked.
15. Do not tilt or move the air purifier while the unit is powered on. Make sure the power is off and remove the plug from the outlet before moving.
16. Use this air purifier only for its intended use as described in this manual. Any other use not recommended by the manufacturer may cause fire, electric shock, or serious injury to a person.
17. Press the power button to turn off the air purifier prior to removing plug from outlet.
18. Children aged 8 and over, as well as persons with reduced physical, sensory or mental abilities or who lack experience and knowledge, may use the device if they are supervised or instructed in the safe use of the device and are aware of the risks involved.

- Children should not play with this appliance as a toy.
19. When charging, avoid overcharging, as this may cause damage to the product.
  20. The device is not to be operated by any power supply sources other than Information and Communication Technology Equipment or a Class 2 Power Unit.
  21. This device complies with the maximum allowable concentration of ozone of 0.050 parts per million by volume (ppmv) in a 24-hour period.

## OPERATING INSTRUCTIONS FOR HOUSEHOLD USE ONLY

### CAUTION

This appliance is for household use.

- Do not immerse base in water.
- To reduce the risk of fire or electric shock, do not disassemble the unit.
- Make sure the air purifier is always 6 inches away from any walls as well as at least 3 feet away from any heat source.
- Check voltage to be sure that the voltage indicated on the nameplate (5V DC) is compatible with the voltage of your outlet.

## INTRODUCTION

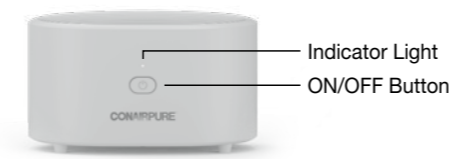
Congratulations on purchasing a ConairPure™ Portable Air Purifier. It provides personal air purification with a HEPA 10 filter to remove small particles like dust and pollen and a plasma ion generator to attract and capture pollutants in the air when used in accordance with DIRECTIONS FOR USE. Unit is designed for areas of up to 15 square feet.

## UNPACKING INSTRUCTIONS

Place the box containing your Portable Air Purifier on a sturdy, flat surface. Open the top flap and remove the instruction booklet and other printed materials from the box. Remove all packing material from unit.

## DIRECTIONS FOR USE

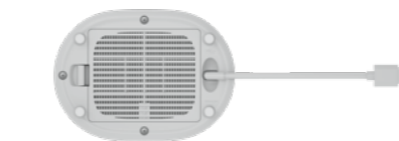
- Can be used cordless or corded.
- With a full charge, the unit will run up to 22 hours on low fan speed, up to 9 hours on medium fan speed, and up to 4.5 hours on high fan speed.
- **Hold ON/OFF button for 0.5 seconds to turn on the air purifier. Default setting is low fan speed with plasma on.**
- Press ON/OFF button again for medium fan speed.
- Press button again for high fan speed.
- Press button again to power off.



## INDICATOR LIGHT

- No Light: Device is off
- White Light: Power is on, Device is not charging, Low fan speed
- Dim Blue Light: Medium fan speed
- Bright Blue Light: High fan speed
- Red Light Flashing: Low battery, Device is charging
- Red Light Solid: Device is fully charged

NOTE: If device is not working, turn off to recharge or turn off, then unplug and plug back in again.



## CHARGING

- Charges with USB-C cable (included).
- Before using the device for the first time, charge continuously for 4 hours. Maximum battery capacity will be reached only after 3 charging and discharging cycles.

- To maintain optimum capacity of the rechargeable battery, it is highly recommended to fully discharge and then recharge the device for 4 hours every 6 months.
- If the indicator light is flashing red, it is time to charge the unit again.

NOTE:

- The charging voltage of this appliance is 5V DC. Before charging the appliance, make sure the output voltage of the charger corresponds to the voltage marked on the rating plate (5V DC). A higher voltage will cause damage to the appliance.
- Do not charge the battery in temperatures below 32°F/0°C.

## USER MAINTENANCE INSTRUCTIONS

### CAUTION

Any servicing other than cleaning and user maintenance should be performed by an authorized service representative. Repairs should be made only by authorized personnel.

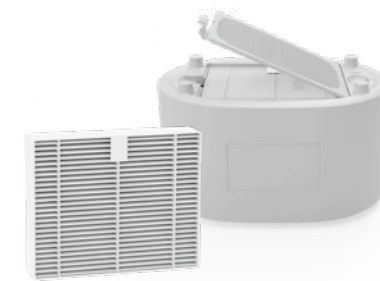
## CLEANING

To clean unit, wipe body with a damp soft cloth. If unit needs more thorough cleaning, soak a cloth in mild detergent diluted

in water, wring out cloth, wipe unit, then wipe with a dry cloth.

IMPORTANT:

- Make sure unit is turned off and unplugged before cleaning.
- Never use scouring powders or hard implements to clean.
- To prevent deterioration and discoloration, do not use benzene, diluents, alcohol, alkali detergents, etc.
- Do not wash filter.



## REPLACING THE FILTER

- We recommend replacing the filter every 3 months. Filters are available for purchase on conair.com (model: APRP03).
- Before replacing the HEPA 10 filter, the unit must be turned off and unplugged.
- On the bottom of the unit, press the buckle to open the filter cover. Remove the old filter and replace with new filter. Close filter cover.

## STORAGE

When not in use, your device should be disconnected and stored in a safe, cool, dry location, out of reach of children.



## BATTERY DISPOSAL

The battery is sealed inside the ConairPure™ Portable Air Purifier, so it cannot be easily removed for recycling.

The entire ConairPure™ Portable Air Purifier should be returned when recycling the battery for this product.

Bring the device to the nearest collection center for proper disposal. DO NOT throw the device into the general municipal waste system.

CONTAINS LITHIUM-ION BATTERY. MUST BE COLLECTED, RECYCLED OR DISPOSED OF PROPERLY. DO NOT DISPOSE OF IN THE MUNICIPAL WASTE.

To find a battery recycling center near you, call 1-800-822-8837 or go to [www.call2recycle.org/locator/](http://www.call2recycle.org/locator/).

RBRC™ is a trademark of the Rechargeable Battery Recycling Corporation.

# WARRANTY

## LIMITED ONE-YEAR WARRANTY

This warranty is available to U.S. consumers only. You are a consumer if you own a ConairPure™ Portable Air Purifier that was purchased at retail for personal, family or household use. Except as otherwise required under applicable law, this warranty is not available to retailers or other commercial purchasers or owners. We warrant that your ConairPure™ Portable Air Purifier will be free of defects in materials and workmanship under normal home use for 1 year from the date of original purchase.

We recommend that you visit [register.conair.com](https://www.conair.com/register) for a fast, efficient way to complete your product registration.

However, product registration does not eliminate the need for the consumer to maintain the original proof of purchase in order to obtain the warranty benefits. In the event that you do not have proof of purchase date, the purchase date for purposes of this warranty will be the date of manufacture.

## CALIFORNIA RESIDENTS ONLY

California law provides that for In-Warranty Service, California residents have the option of returning a nonconforming product (A) to the store where it was purchased or (B) to another retail store that sells Conair® products of the same type. The retail store shall then, according to its preference, either repair the product, refer the consumer to an independent repair facility, replace the product, or refund the purchase price less the amount directly attributable to the consumer's prior usage of the product. If neither of the above two options results in the appropriate relief to the consumer, the consumer may then take the product to an independent repair facility, if service or repair can be economically accomplished. Conair and not the consumer will be responsible for the reasonable cost of such service, repair, replacement, or refund for nonconforming products under warranty. California residents may also, according to their preference, return nonconforming products directly to Conair for repair or, if necessary, replacement by calling our Consumer Service Center toll-free at 1-800-3-CONAIR. Conair will be responsible for the cost of the repair, replacement, and shipping and handling for such nonconforming products under warranty.

## HASSLE-FREE REPLACEMENT WARRANTY

Your ultimate satisfaction in Conair products is our goal, so if your ConairPure™ Portable Air Purifier should fail within the generous warranty period, we will repair it or, if necessary, replace it at no cost to you.

To obtain a return shipping label, visit us at: <https://www.conair.com/en/CustomerSupport>.

Or call our toll-free Consumer Service Center department at 1-800-3-CONAIR to speak with a representative.

Your ConairPure™ Portable Air Purifier has been manufactured to the strictest specifications and has been designed for use only in 120-volt outlets and only with authorized accessories and replacement parts. This warranty expressly excludes any defects or damages caused by attempted use of this unit with a converter, as well as use with accessories, replacement parts or repair service other than those authorized by Conair. This warranty does not cover any damage caused by accident, misuse, shipment or other than ordinary household use. This warranty excludes all incidental or consequential damages. Some states do not allow the exclusion or limitation of these damages, so these exclusions may

not apply to you. You may also have other rights, which vary from state to state.

**IMPORTANT:** If the nonconforming product is to be serviced by someone other than Conair's Authorized Service Center, please remind the servicer to call our Consumer Service Center at 1-800-3-CONAIR to ensure that the problem is properly diagnosed, the product is serviced with the correct parts, and the product is still under warranty.

## FEDERAL COMMUNICATIONS COMMISSION NOTICE

### WARNING

Changes or modifications to this unit not expressly approved by the party responsible for compliance could void the user's authority to operate the equipment. This device complies with Part 15 of the FCC Rules. Operation is subject to the following two conditions: (1) This device may not cause harmful interference, and (2) This device must accept any interference received, including interference that may cause undesired operation. NOTE: This equipment has been tested and found to comply with the limits for a Class B digital device, pursuant to Part

15 of the FCC Rules. These limits are designed to provide reasonable protection against harmful interference in a residential installation. This equipment generates, uses and can radiate radio frequency energy and, if not installed and used in accordance with the instructions, may cause harmful interference to radio communications. However, there is no guarantee that interference will not occur in a particular installation. If this equipment does cause harmful interference to radio or television reception, which can be determined by turning the equipment off and on, the user is encouraged to try to correct the interference by one or more of the following measures:

- Reorient or relocate the receiving antenna.
- Increase the separation between the equipment and receiver.
- Connect the equipment into an outlet on a circuit different from that to which the receiver is connected.
- Consult the dealer or an experienced radio/TV technician for help.

## SUPPLIER'S DECLARATION OF CONFORMITY

Brand: CONAIRPURE™

Model No. AP03

Description: Portable Air Purifier

Responsible Party: Conair LLC, 1 Cummings Point Road, Stamford, CT 06902 1-800-334-4031

Standards: FCC Part 15 Subpart B, ANSI C63.4-2014

This device complies with Part 15 of the FCC Rules. Operation is subject to the following two conditions:

- 1) This device may not cause harmful interference.
- 2) This device must accept any interference received, including interference that may cause undesirable operation.

DATE OF ISSUE: 03/13/2023

**MEETS CALIFORNIA OZONE EMISSIONS LIMIT: CARB CERTIFIED.**

**PLEASE REGISTER THIS PRODUCT AT REGISTER.CONAIR.COM**

**SERVICE CENTER CONAIR LLC**

Service Department  
7475 North Glen Harbor Blvd.  
Glendale, AZ 85307

Visit us on the web at [www.conair.com](http://www.conair.com)

©2023 Conair LLC  
Glendale, AZ 85307  
stock.image

Model AP03  
23PA089642

IB-18239

CONAIRPURE



## PORTABLE AIR PURIFIER

INSTRUCTION GUIDE  
ALL AP03 MODELS

For your safety and continued enjoyment of this product, always read the instruction book carefully before using.